

Original Drummer: Mike Portnoy

# Nightmare

Avenged Sevenfold

Transcribed by Nitzan Ravhon

I

12

12/8

♩ = 130

no crash

V1 + 2

no crash

no crash

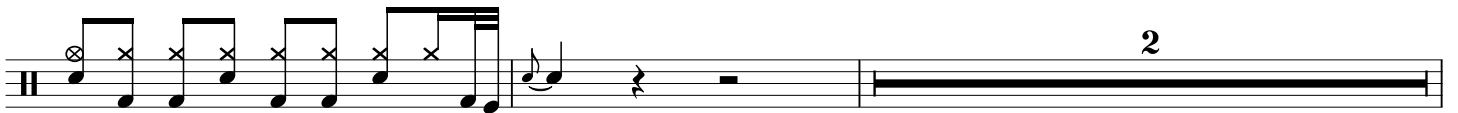
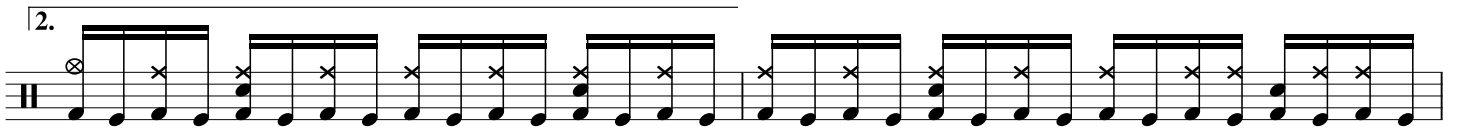
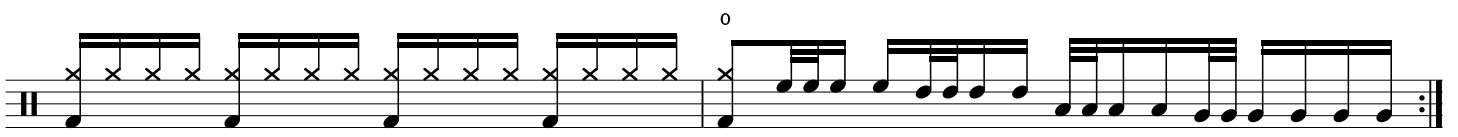
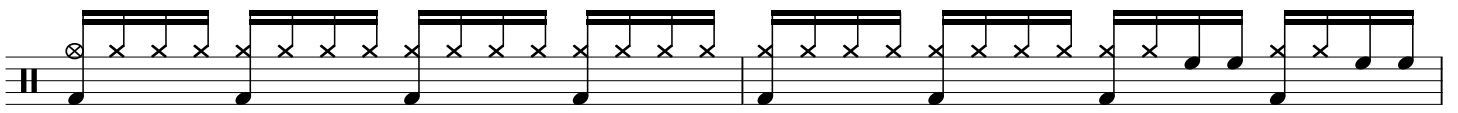
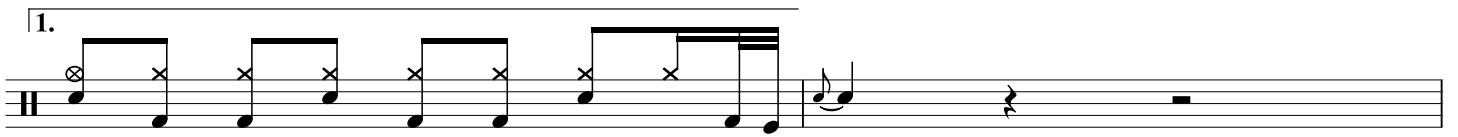
6

drop on repeat

snare on repeat

snare on repeat

C1 + 2



$\text{♩} = 87$

Musical staff with 12/8 time signature. The staff contains a series of rhythmic patterns: a sequence of eighth notes with 'x' marks above them, followed by a sequence of eighth notes with 'x' marks above them, and finally a sequence of eighth notes with 'x' marks above them. The staff ends with a double bar line and repeat dots.

Musical staff with a double bar line and repeat dots. The staff contains a series of rhythmic patterns: a sequence of eighth notes with 'x' marks above them, followed by a sequence of eighth notes with 'x' marks above them, and finally a sequence of eighth notes with 'x' marks above them.

**S**

$\text{♩} = 130$

Musical staff with 4/4 time signature. The staff contains a series of rhythmic patterns: a sequence of eighth notes with 'x' marks above them, followed by a sequence of eighth notes with 'x' marks above them, and finally a sequence of eighth notes with 'x' marks above them. There are three triplet markings above the staff.

no crash

Musical staff with a double bar line and repeat dots. The staff contains a double bar line and repeat dots.

Musical staff with a double bar line and repeat dots. The staff contains a series of rhythmic patterns: a sequence of eighth notes with 'x' marks above them, followed by a sequence of eighth notes with 'x' marks above them, and finally a sequence of eighth notes with 'x' marks above them.

Musical staff with a double bar line and repeat dots. The staff contains a series of rhythmic patterns: a sequence of eighth notes with 'x' marks above them, followed by a sequence of eighth notes with 'x' marks above them, and finally a sequence of eighth notes with 'x' marks above them.

**V3** Loose

Musical staff with a double bar line and repeat dots. The staff contains a series of rhythmic patterns: a sequence of eighth notes with 'x' marks above them, followed by a sequence of eighth notes with 'x' marks above them, and finally a sequence of eighth notes with 'x' marks above them. There are two first ending markings above the staff.

Musical staff with a double bar line and repeat dots. The staff contains a series of rhythmic patterns: a sequence of eighth notes with 'x' marks above them, followed by a sequence of eighth notes with 'x' marks above them, and finally a sequence of eighth notes with 'x' marks above them.

Musical staff with a double bar line and repeat dots. The staff contains a series of rhythmic patterns: a sequence of eighth notes with 'x' marks above them, followed by a sequence of eighth notes with 'x' marks above them, and finally a sequence of eighth notes with 'x' marks above them.

**V4** Loose

Musical staff with a double bar line and repeat dots. The staff contains a series of rhythmic patterns: a sequence of eighth notes with 'x' marks above them, followed by a sequence of eighth notes with 'x' marks above them, and finally a sequence of eighth notes with 'x' marks above them. There are two first ending markings above the staff.

Loose

Musical staff with a double bar line and repeat dots. The staff contains a series of rhythmic patterns: a sequence of eighth notes with 'x' marks above them, followed by a sequence of eighth notes with 'x' marks above them, and finally a sequence of eighth notes with 'x' marks above them. There is a triplet marking above the staff.

**B**

Musical score for section B, consisting of seven staves of guitar notation. The notation includes rhythmic patterns with 'x' marks for fretted notes and various melodic lines. A triplet of eighth notes is marked with a '3' above it in the third staff. The piece concludes with a double bar line.

**C3**

Musical score for section C3, consisting of seven staves of guitar notation. The notation features a complex rhythmic pattern with many 'x' marks, indicating a dense fretted texture. The piece ends with a 'choke' instruction and a double bar line.