

Karma Police

Original Drummer: Philip Selway

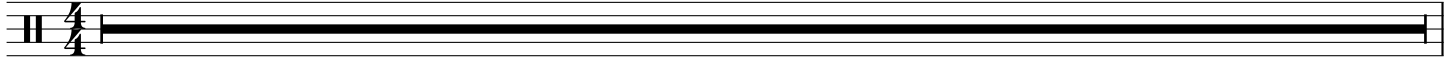
J = 75

Radiohead

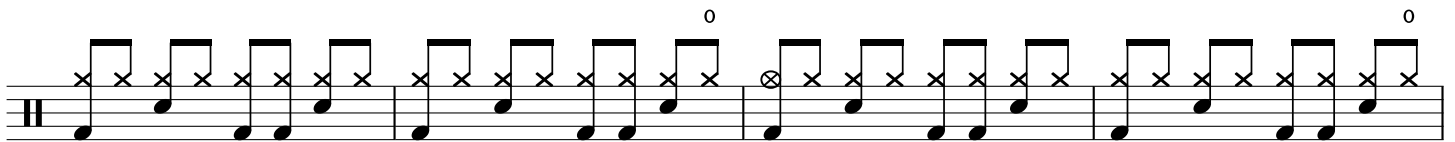
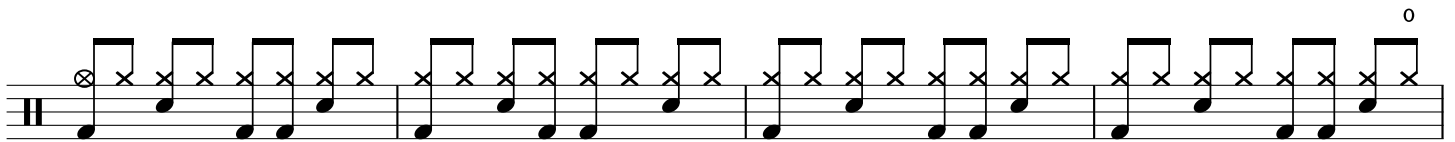
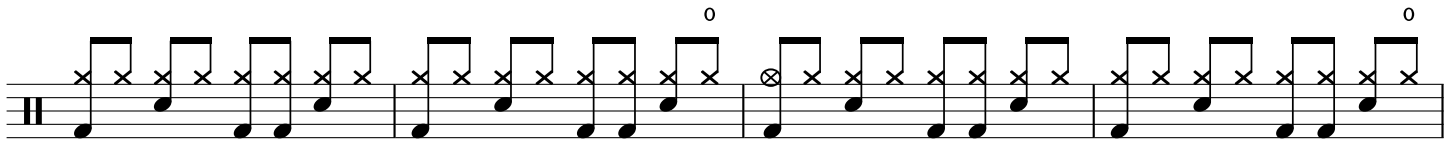
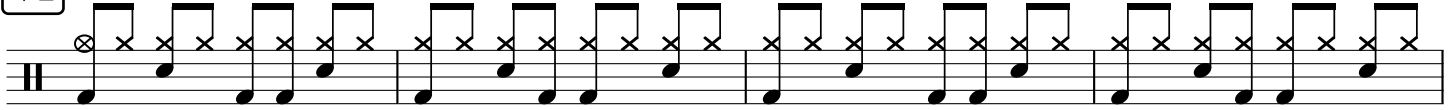
Transcribed by Nitzan Ravhon

I

8

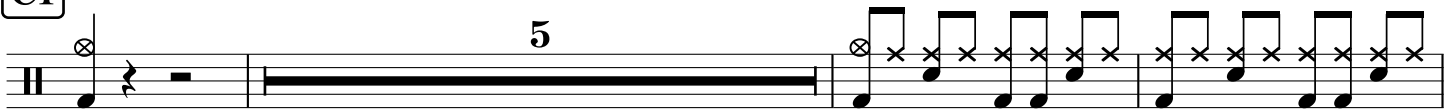


V1

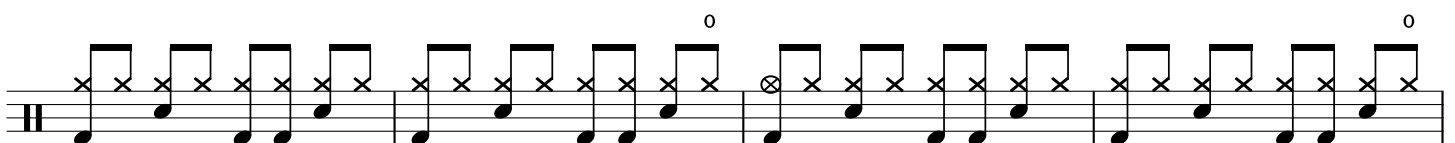


C1

5



V2



C2

Musical notation for section C2. It begins with a treble clef and a whole rest. This is followed by a long horizontal line with a '5' above it, indicating a five-measure rest. The notation then continues with a sequence of eighth notes and sixteenth notes, including some beamed sixteenth notes.

B

Musical notation for section B. It starts with a treble clef and a sequence of eighth notes. Some notes have an 'x' above them, and others have an 'o' above them. The sequence continues across several measures.

Musical notation for section B, continuing from the previous block. It features a treble clef and a sequence of eighth notes with 'x' and 'o' markings above them.

Musical notation for section B, continuing from the previous block. It features a treble clef and a sequence of eighth notes with 'x' and 'o' markings above them, ending with a double bar line and 'x4'.

Musical notation for section B, continuing from the previous block. It features a treble clef and a sequence of eighth notes with 'x' markings above them.