

Original Drummer: Josh Dun

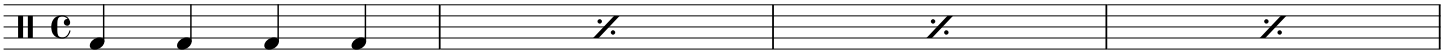
J = 127

Jumpsuit

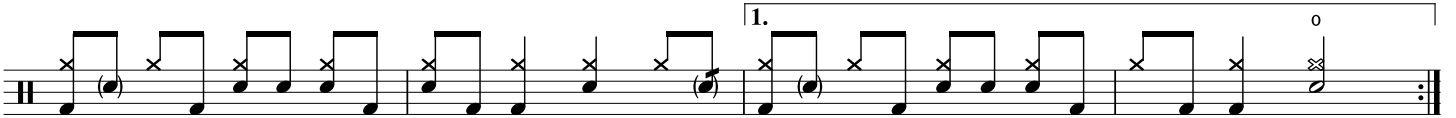
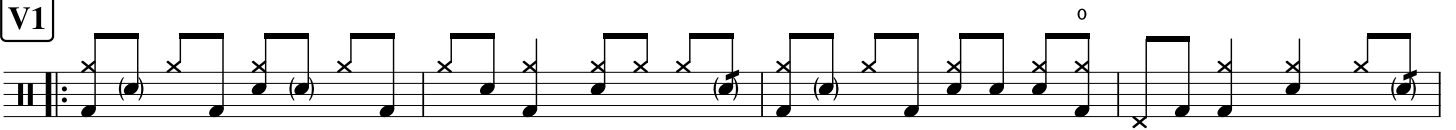
Twenty One Pilots

Transcribed by Nitzan Ravhon

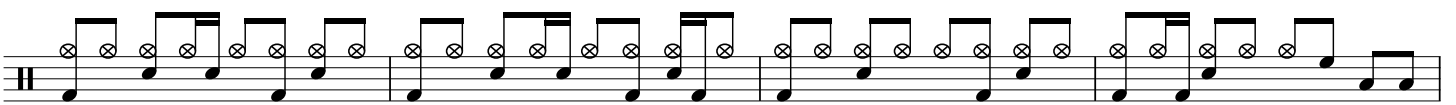
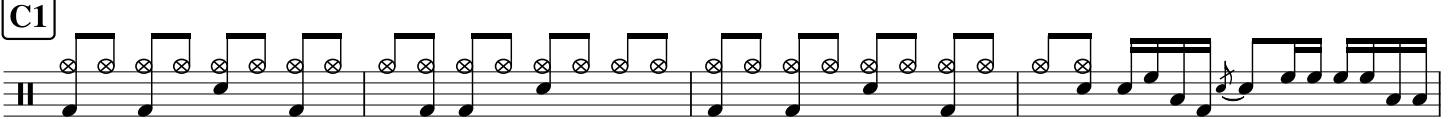
I



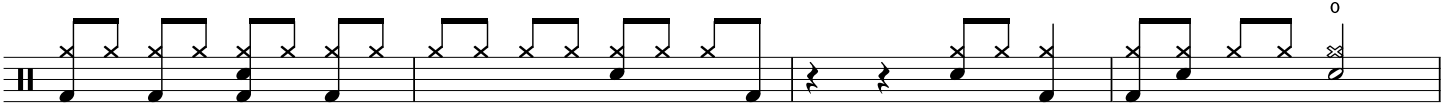
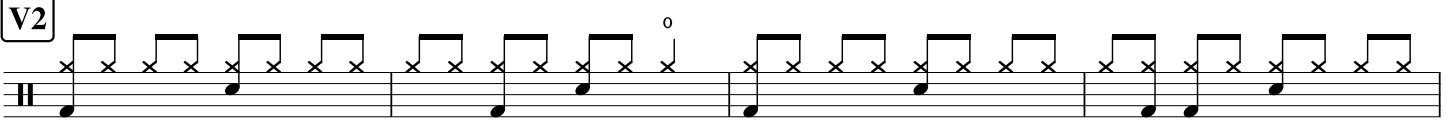
V1



C1



V2



B

Musical staff for section B. It features a treble clef and a key signature of one flat. The staff contains a sequence of notes and rests. There are two measures with a '2' above them, indicating a double bar line or a specific rhythmic value. The notes are primarily quarter notes and eighth notes.

Piano
Chord

16

A staff for piano chords, consisting of a single horizontal line with a treble clef on the left. The number '16' is centered above the staff.

B2

First line of musical staff for section B2. It features a treble clef and a key signature of one flat. The staff contains a sequence of notes and rests, including some notes with 'x' marks above them, possibly indicating muted notes or specific articulation. There is a '0' above a note in the second measure.

Second line of musical staff for section B2. It features a treble clef and a key signature of one flat. The staff contains a sequence of notes and rests, including some notes with 'x' marks above them. There is a '0' above a note in the second measure.

4

Third line of musical staff for section B2. It features a treble clef and a key signature of one flat. The staff contains a sequence of notes and rests, including some notes with 'x' marks above them. There are two measures with a '4' above them, indicating a double bar line or a specific rhythmic value.

C2

First line of musical staff for section C2. It features a treble clef and a key signature of one flat. The staff contains a sequence of notes and rests, including some notes with 'x' marks above them.

Second line of musical staff for section C2. It features a treble clef and a key signature of one flat. The staff contains a sequence of notes and rests, including some notes with 'x' marks above them.