

Original Drummer: Josh Dun  
Drum Programming: Tyler Joseph

$\text{♩} = 85$   
Swing 16th

# Stressed Out

Twenty One Pilots

Transcribed by Nitzan Ravhon

**I**

Drum notation for I: A single staff with a treble clef and a common time signature. It contains a series of eighth notes with 'x' marks above them, indicating cymbal hits. The notes are grouped in pairs. The staff ends with a double bar line and repeat dots.

**V1**

Drum notation for V1: A single staff with a treble clef. It contains a series of eighth notes with 'x' marks above them, indicating cymbal hits. The notes are grouped in pairs. The staff ends with a double bar line and repeat dots.

**PC1**

Drum notation for PC1: A single staff with a treble clef. It contains a series of eighth notes with 'x' marks above them, indicating cymbal hits. The notes are grouped in pairs. The staff ends with a double bar line and repeat dots.

**C1**

Drum notation for C1: A single staff with a bass clef. It starts with a double bar line and a '2' above it, indicating a two-measure rest. The staff then contains a series of eighth notes, with a triplet of eighth notes at the end.

Continuation of drum notation for C1: A single staff with a treble clef. It contains a series of eighth notes with 'x' marks above them, indicating cymbal hits. The notes are grouped in pairs. The staff ends with a double bar line and repeat dots.

**PoC1**

Drum notation for PoC1: A single staff with a treble clef. It contains a series of eighth notes with 'x' marks above them, indicating cymbal hits. The notes are grouped in pairs. The staff ends with a double bar line and repeat dots.

**V2**

Drum notation for V2: A single staff with a treble clef. It contains a series of eighth notes with 'x' marks above them, indicating cymbal hits. The notes are grouped in pairs. The staff ends with a double bar line and repeat dots.

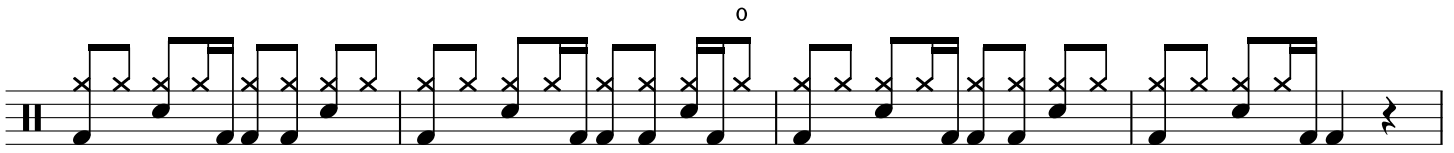
Continuation of drum notation for V2: A single staff with a treble clef. It contains a series of eighth notes with 'x' marks above them, indicating cymbal hits. The notes are grouped in pairs. The staff ends with a double bar line and repeat dots.

**PC2**

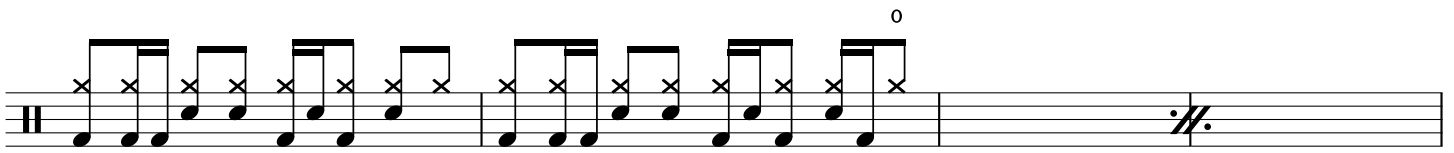
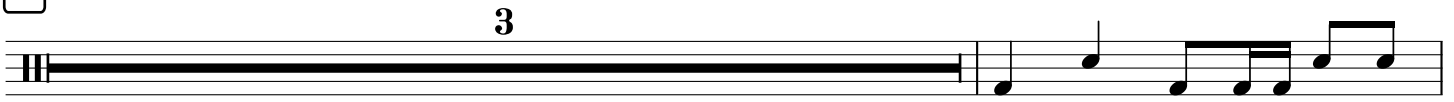
Drum notation for PC2: A single staff with a treble clef and a common time signature. It contains a series of eighth notes with 'x' marks above them, indicating cymbal hits. The notes are grouped in pairs. The staff ends with a double bar line and repeat dots.

**C2**

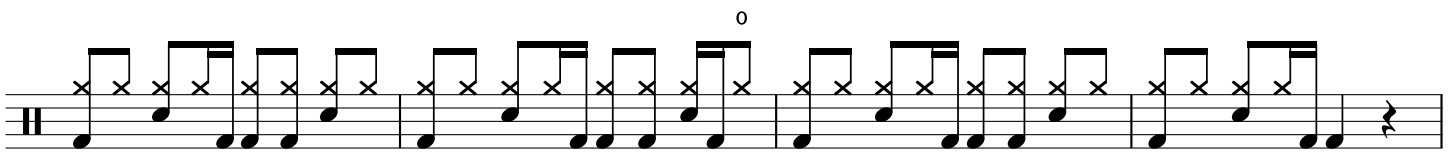
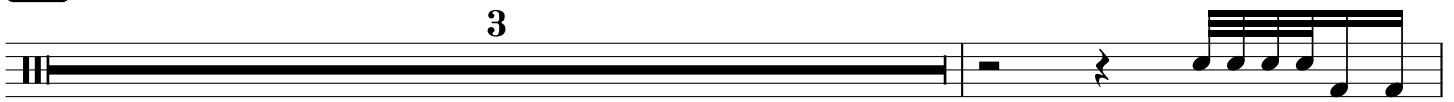
Drum notation for C2: A single staff with a bass clef. It starts with a double bar line and a '2' above it, indicating a two-measure rest. The staff then contains a series of eighth notes, with a triplet of eighth notes at the end.



**B**



**C3**



**O**

